

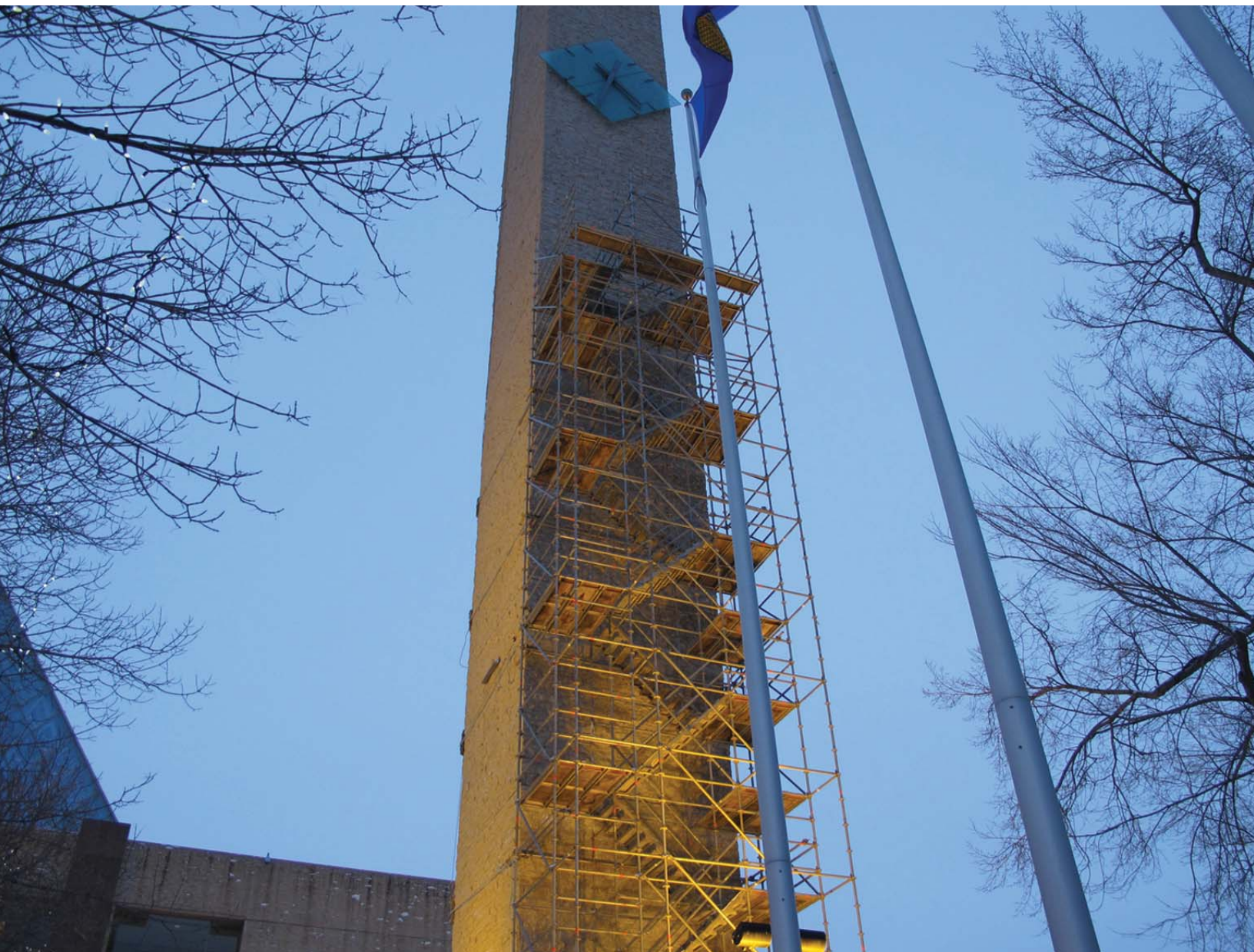
Edmonton Grey Cup Zipline Event

By Frank Frietsch, frank.frietsch@layher.us

The pictures of the Grey Cup event were taken during the construction of the scaffold. The last couple of pictures are fuzzy due to the extreme cold weather that hit Edmonton that weekend. It was so cold that the camera could not focus – temps of -35C.

The scaffold was fairly basic with the exception of the top platforms. Steeplejack Services erected both ends using Layher Allround Scaffold material. The taller tower measured 80ft was anchored every 15ft to the large clock tower using cables and softeners. The gentlemen from Ziptrek Ecotours are professional climbers and rigged up, baleayed down the tower and placed the straps around it. The second tower measuring approx. 40ft tall was secured down with cables (guy wires) and large concrete k-rails. This tower was directly over a subway station, so it was very specific on where to place the counter weight.

The scaffolds had been erected before in Vancouver for the 2010 Winter Olympics. Ziptrek Ecotours, zip line company, already had basic architectural drawings for Steeplejack to reference and base the detailed drawings on. Once in place an engineering firm stamped the drawings and verified the scaffold on site. Under Canadian legislation this event fell under the regulations of the Amusement Act, so a government official had to visit the site once the scaffold and the zip line were completed and certify the safe ride!



Hard work comes with a perk: Prior to the event the zip line required quite a bunch of test runs which the Steeplejack team voluntarily endured! It was not all fun, but to make sure that during peak attendance no rider would accidentally stop half way down the track and would have to be rescued.



Beware of imitations! Use genuine Layher. The Original.

Make sure you don't risk -

- lives, and compromise safety • scaffolding integrity • invalidating guarantees or insurance • damage to your reputation

- ALLROUND SCAFFOLDING
- SPEEDYSCAF

- PROTECTION SYSTEMS
- ACCESSORIES

Call us now.

Layher

More Possibilities. The Scaffolding System.
www.layherscaf.com

Layher Inc. 4847 Timber Creek Houston, TX 77017 1 866 300 0904 info@layherscaf.com